

# EMERSONIAN

A monthly newsletter for families and friends of **Emerson Waldorf School**

## News and Updates

### Report from the College of Teachers

Welcome, everyone, to the start of another wonderful year! The College of Teachers hopes you and your family had an enjoyable and rejuvenating summer. Members of the College worked together over the summer – in between our own moments of rest and relaxation – in anticipation of the coming academic year, and would like to share some of what we accomplished.

The issue of enrollment was front and center this summer. The College heard from Raelee Peirce, the school's new part-time Outreach and Marketing Director, on her ideas and initiatives to encourage wider awareness of and interest in Emerson. A pioneer program for the fall will offer High School's main lesson blocks to interested home school students. The College and High School are hopeful that students who participate in this program will become full-time students.

The College also considered the adoption of a new database system for the school that could be a means of improving communications and record keeping. Responding to the high school parent body in the summer survey, there was discussion about extracurricular offerings for students in the high school. Look in

the coming weeks for word about possible clubs, movie nights, and other social outlets for our upper school students.

Finally, the school's work with AdminService begun this past spring has been ongoing as Emerson moves into its next phase of administrative development. Patricia Cornell and Jason Child are the College representatives on the Interim Leadership Team (ILT). They updated the College weekly this summer on issues and recommendations from AdminService. The College looks forward to welcoming Kay Hoffman from Administrative Services later this fall. You may see her on campus, and she will be meeting with the College during her stay. You can contact either Patricia or Jason, as the on-site administrators, who will be available in the Lower School office – see their schedule outside the lower school office.

Patricia Cornell will serve again as College Chair. The College also confirmed the following chairpersons: Robin Olson for Early Childhood, Ingeborg Boesch for Subjects, Shannon Wiley for the grades, and Jessie Rabius for the High School. They will meet weekly to address questions and route business through the appropriate sections and committees of the

school. We thank all of them for their service.

The College is looking forward to the 2011-2012 school year. We will be sharing our work in these pages from time to time, and welcome input from the community. - *Nancy Bowman, for the College of Teachers*

### **2011 Back-to-School Picnic! Saturday, September 10, 5-7pm EWS Athletic Field**

It's time for our community to celebrate the beginning of another year at EWS, meet new families and get reacquainted with returning families. We will have burgers, veggie burgers and hot dogs right off the grill along with buns and condiments. Please bring side dishes to share as well as your own dishes and utensils, folding chairs, a blanket to sit on, or anything else you might want to bring! All who attend can participate in the all-school scavenger hunt, face painting and hula hoops, with lots of time to eat and socialize. This year we will have the first annual New-To-You sale for those of you interested in getting a great deal on used rain gear (price ranging from FREE up to \$5 - proceeds will go back to the school). A special treat at 6:30pm will be revealed to all who are able to stick around! See you on Saturday! Questions? Contact [events@emersonwaldorf.org](mailto:events@emersonwaldorf.org)

## Calendar of Events

- Sept. 7 W. 6th Grade Parent Evening 7:00pm  
Making Sense of Discipline the Brown Wing 7:00pm
- Sept. 8 Th. 2nd Grade Parent Evening 7:00pm
- Sept. 10 Sa. 4th Grade Parent Morning 9:30am  
Back to School Cook-Out/Potluck Picnic 5:00pm
- Sept. 10-17 12th Grade Zoology Trip
- Sept. 12 M. 8th Grade Parent Evening 7:00pm  
9th Grade Parent Evening 7:00pm
- Sept. 14 W. Board Meeting 7:00pm  
Making Sense of Discipline the Brown Wing 7:00pm
- Sept. 15 Th. 1st Grade Parent Evening 7:00pm
- Sept. 20 T. Nursery Parent Evening 6:30pm  
Kindergarten Parent Evening 7:00pm  
12th Grade Parent Evening 7:00pm
- Sept. 21 W. Making Sense of Discipline the Brown Wing 7:00pm

[www.calendarwiz.com/emersonwaldorf](http://www.calendarwiz.com/emersonwaldorf)

### **Pass It Along!!**

This year 9th grade main lesson block classes will be available to homeschoolers! For more information about this program, click on "high school" from [emersonwaldorf.org](http://emersonwaldorf.org), or follow this link:

[www.emersonwaldorf.org/high-school/grade-9-homeschoolers/](http://www.emersonwaldorf.org/high-school/grade-9-homeschoolers/)

If you know of any families that would be interested, please let them know! They can also contact Mary Leonhardi at (919) 967-1858 x 14 or [admissions@emersonwaldorf.org](mailto:admissions@emersonwaldorf.org) with any questions or to learn more.

### **First Grade Playground Renovation**

You may have noticed that the First Grade Playground received a major overhaul this summer! Materials were financed by the school but the work was entirely performed by volunteer labor over three weekends in August. We had teachers, families,

dads, moms, kids, friends, grandparents - all come out to help. If you want some sand moved, we know who to call!

Now our younger students have a drastically improved main play structure with several new elements, a fun new rope element, and a new sandbox with 7 tons of fresh sand! There were dozens of individuals that lent a hand, but special thanks go to Francisco Plaza, Keith Bartholomew, Jim Mueller, Lee Marchman, Ted Hart, and Kelley Kirven for coming out on multiple days. There is a lot of talent in our community, and it was never more evident as we did this work.

— *Charlie Viles*



**Dr. Gordon Neufeld: Making Sense of Discipline Video Series**  
Wednesdays at 6:00pm and 7:00pm, Sept 7, 14, 21 in the Brown Wing  
Part 2 - 09/07 at 6:00pm Discipline Methods to Avoid and Why  
Part 3 - 09/07 at 7:00pm or Encore on 09/14 at 6:00pm Discipline That Doesn't Divide  
Part 4 - 09/14 at 7:00pm or Encore 09/21 at 7:00pm Addressing Discipline When Learning Challenges Are Present

Through this series, participants have the opportunity to develop a comprehensive approach to discipline with strategies that are attachment-safe and developmentally friendly. This series has been phenomenal, and parents have been inspired. Neufeld presents information about a paradigm shift in how we respond to our children. The series is applicable to parents of children of all ages. —*Raelee Peirce*

### **Items needed for the Educational Support Program**

- mini-trampoline
- scooter
- stretched out hair bands ( I use them to make a special pencil grip and the stretched out pony-tail bands work better than new)

If you are able to donate any of these items, please bring them to the Woodland Cottage or contact Lauren Nyland at [mills.lauren@gmail.com](mailto:mills.lauren@gmail.com).

**Main Lesson Blocks**

- 1<sup>st</sup> Grade - Form Drawing**
- 2<sup>nd</sup> Grade - Language Arts**
- 3<sup>rd</sup> Grade - Language Arts—Creation**
- 4<sup>th</sup> Grade - Language Arts—Norse**
- 5<sup>th</sup> Grade - Botany**
- 6<sup>th</sup> Grade - Geometrical Drawing**
- 7<sup>th</sup> Grade - Perspective Drawing**
- 8<sup>th</sup> Grade - Geometry of Art & Nature**
- 9<sup>th</sup> Grade - Mythology**
- 10<sup>th</sup> Grade - Mechanics**
- 11<sup>th</sup> Grade - Renaissance**
- 12<sup>th</sup> Grade - Zoology**



**Spotlight on 5th grade**

The 5th grade starts this year with a study of Botany. You may see us wandering around the campus during main lesson over the next few weeks as we look for mushrooms, ferns, lichen and all sorts of simple plants. We plan to get some great spore-prints and a few strange plants to adorn the room. If you happen to come upon a great, weird, scary, cool, or generally amazing mushroom, please consider bringing it by the classroom! Be safe and careful with these fungi and always remember the mushroom motto: There are old mushroom pickers and there are bold mushroom pickers, but there are no old, bold mushroom pickers.

*- Mr. Wiley, 5th grade teacher*



---

### News of the Class of 2012

The Class of 2012 is off to an exciting start for their Senior year. They are fourteen strong, having happily welcomed Samantha Davis back to the class. The group departs for Hermit Island, Maine, on Saturday, September 10, and will spend a week studying Zoology and mingling with students from half a dozen other Waldorf schools. High School teacher Lisa Krogh and visiting block teacher Strouse Campbell will accompany Emerson's seniors on this trip. This is the second year that Emerson has participated in this week of study and fellowship.

Upon their return from Maine, the class will resume their daily schedule and conversations with Kathleen Jackson, the high school's college guidance counselor, concerning their post-graduation plans. Wish them well in their deliberations and applications! Most have already begun visiting colleges of interest; the school will also welcome representatives from various colleges and universities on campus this year.

Class sponsors Nancy Bowman and Peter Moyers, as well as the high school faculty as a whole, look forward to working with this wonderful group of young people over the course of the year. We will observe their progress on individual senior projects, and aid them where possible; help them plan social activities on and off campus; and prepare for a final trip together in the spring. May the intervening months in this last year of high school be joyous and rewarding for all! - *Nancy Bowman*

### Coffee Mornings

Are you curious about the philosophy behind Rudolph Steiner's Waldorf education? A group of parents, faculty and community members enjoy meeting each Monday after morning drop-off to discuss our readings of Steiner's writing. Please come join us! The first gathering for this school year will be on Monday, September 12. Contact Ingeborg Boesch at [ingeborgboesch@yahoo.com](mailto:ingeborgboesch@yahoo.com) for the location or meet at the coffee table by 8:40 on Monday the 12th.

### Social Inclusion Study Group: Preventing the Cycle of Bullying

Bullying has been described as the biggest school problem for kids ages eight to fifteen. The purpose of our study group is to support social resiliency in our children. We will be learning practical skills and also beginning a study of understanding and promoting tolerance. The Social Inclusion study group will be restarting on Thursday mornings from 8:30-9:30 meetings on September 8. We will meet in the Woodland Cottage (the building near morning coffee). New members are always welcome. Please contact Lauren Nyland with any question at 968-7721 or [mills.lauren@gmail.com](mailto:mills.lauren@gmail.com).

### Concert for Peace

Sister Cities of Durham, joined by Riverside High School Performing Arts Department and the Durham Children's Choir, will produce and present a free "Concert for Peace" in Durham, NC as part of the 2011 September Concerts for Peace. The concert will be performed simultaneously in more than 100 cities around the world, in commemoration of the

10th anniversary of the September 11th tragedy.

Durham's sister cities are Durham, England; Kostroma, Russia; Arusha, Tanzania; and Toyama, Japan. EWS 4th grade student Hannah Butler will be performing! Congratulations, Hannah!

The event will be held in the GlaxoSmithKline Theatre at Riverside High School on September 10, 2011 at 3:00pm. Admission is free. There will be a grand finale featuring the Durham Children's Choir, the Riverside High Choruses along with all performers!

For more information, please contact Scott Hill, Director, Durham Children's Choir at 919-489-1451 or [scotthill@dccchoir.org](mailto:scotthill@dccchoir.org).

### EWS Jazz Band

EWS will have two jazz bands this fall. The middle school band will meet at 3:30-4:45pm on Thursdays in the music room, and will be open to any 6th, 7th or 8th grader that has proficiency on an instrument, is willing to practice individually, and can come to rehearsals. The high school band is open to 9th-12th graders and will meet at 5:00-6:15pm on Thursdays. High school students who would like to participate in the middle school band may do so. Both bands are also open to students from other schools. The bands will focus on jazz, but will also play other styles such as rock, pop and Latin. The goal of the after school band program is to provide an educational, creative music and performance outlet for the students as well as to promote EWS visibility in the

community through community participation in the bands, and performances. Erich Lieth will direct both bands. The fall session will begin on September 1 and meet every week until the end of the year except when the school is on holiday. Tuition for the fall session will be \$154. **Please pay Erich directly, as it will no longer be billed through TADS.** Please direct questions to Erich at [erich@erichlieth.com](mailto:erich@erichlieth.com).

### Adult Eurythmy Classes

Eve Olive will be offering Eurythmy classes for adults in the Eurythmy Room on Wednesday mornings beginning on Wednesday, Sept. 28. The classes will run from 8:35 - 10:00 a.m. and are for all who are interested. This is a wonderful opportunity to experience and learn one of the arts that makes Waldorf education so unique. Come and join the community. You may contact Eve at 489-2564 or [eveolive@frontier.com](mailto:eveolive@frontier.com).

### EWS Michaelmas

The Festival Life of EWS begins with Michaelmas, The Celebration of Courage, Compassion and the Inner Light of the Human Being



Michael has been the Champion of both Christian and Jew; hundreds of churches in Europe have been dedicated to him. He is a well-known figure in icon painting—usually shown with a shield and lance, or fiery sword, gazing outwards while subduing the dragon underfoot. At times he is shown holding a balance with which he

weighs the souls of men and again he looks outward with his characteristic questioning gaze. September 29th falls within the astrological sign of the Scales (Libra), and very near the perfect balance point of daylight and darkness in the year. To achieve balance between that part of us which belongs to nature, and the part which strives for goals which are not to be found in our ‘human nature,’ we have to outweigh the decline into death and darkness to which autumn would lead us. Through our own efforts, we must discover new inner resources which can help us to grow towards life and light. Spring is the time of resurrection and now at the opposite pole of the year, a resurrection experience for the soul is needed as a counter-force to autumnal decay in the world.

As one of the English Quarter Days, Michaelmas has long been a time of new beginnings, when contracts were renewed between landlord and tenant, between employer and employee. In the past, hiring fairs were held at this time, where farm laborers and domestic servants offered themselves for work. Universities in United Kingdom still begin their year at Michaelmas. So, ‘taking up a new task’ has long been a theme for this season, and the task Michael offered us all when he cast the great dragon into the earth, can become very real in our lives whenever we wish to take a new step on our inner journey – to raise ourselves a little above our nature. Then we discover that ‘into the earth’ also means into us, for we are immediately caught up in a battle

with the weight, the inflexibility and the intractability of the hidden ‘dragon’ in our own being.

Michael beckons us to find the spirit to come alive through the dying year. The flashing meteor showers are said to be the sword he wields for us; each falling star is made of iron – the iron we need to strengthen the resolution of the heart. The seed-thoughts of the summer can be harvested now as deeds – to find their place in the world among people, to generate a life of their own that goes on into the future.

*This is part of the description in “All Year Round” by Ann Druitt, Christine Fynes-Clinton and Marije Rowling.*

**Michaelmas will be celebrated in the Early Childhood on Thursday, September 29. For grades 1 – 12 it will be celebrated on Friday, September 30.**

On both days the festival is celebrated during the school hours. More details of the festival celebration will come in the Gnome News.

– *The Festivals Committee*



## Corporate Donations

Get your boss to contribute to EWS! Where I work, we have a "community giving" program, where my contributions of my time and money are matched by my employer. I have access to \$750 in matching funds, and while I use some of it to match the dollars I give, I also make good use of their donations for my volunteer hours. How does it work? For every 5 hours of time I volunteer to EWS (or any non-profit), my company will donate \$50. I've already banked a couple of hours this week with lice-checking, so it won't be long before I ask for the first installment. Why am I telling you this? Look at your company's web site, and see if you have a similar community giving program. See if they'll match the financial donations you make, and better yet, see if they'll match your volunteer hours with cash! What counts? Anything outside of normal activities, like work days, gardening, weeding, preparing the coffee, working on the farm, lice checks, driving on field trips, hanging blackboards, painting, festival planning, just to name a few. Any activity that benefits the school that they might otherwise pay for generally qualifies. If your company doesn't do this, put it in the suggestion box, and use peer pressure, saying "lots of other companies have community giving programs." – Lars Nyland

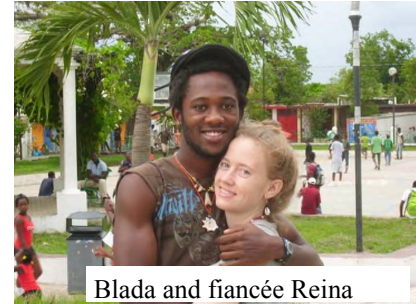


## Waldorf Alumni Who are Making a Difference – by Kathleen Wright

A Waldorf education provides students with a balance of the head, heart and hands, thus enabling the student to find his or her true vocation and to transform his or her ideals into action with a passion. Such is the case with the Waldorf alumni Reina Galjour a volunteer midwife in Haiti.

Reina Galjour –In 1986, Reina Galjour entered my First Grade class at the Emerson Waldorf School. She was the most loving pupil I have ever taught. She loved everything we did in class. Now here it is 25 years later, and Reina is now my hero. She has taken her gift of midwifery to Haiti and has been there under dire Third World conditions for more than a year and a half. Her years in El Paso, Texas as a midwife were far more idyllic than she had realized. In the many years there she lost only one baby. In Haiti, death is virtually a daily occurrence. What seems to have shocked Reina most in the beginning, however, was how cruel mothers-in-labor were treated; many even being slapped to quiet them down. That is something that Reina has worked tirelessly to change and it appears that things have improved immensely since she brought her angelic heart to the people there.

I have been keeping up with Reina's blog, experiencing her heartbreaking trials and triumphal joys at; [www.reinagaljour.blogspot.com](http://www.reinagaljour.blogspot.com). Do check it out. Reina is a good writer and really captures the feeling of the Haitian life. In spite of no running



Blada and fiancée Reina

water or toilets, never enough medicines and blood, Reina has managed to find joy in Haiti. She has met the love of her life, Desauguste Johnson, better known as Blada, with whom she is engaged. Reina has mastered the Creole language and has become adept at the local dances, which she loves.

Reina will be visiting North Carolina in September in order to fundraise for the organization for which she works – Midwives for Haiti. Reina assures me that this is a very reputable organization, far more so than the Red Cross. Please try to attend one of the fundraisers listed below. If you cannot, please try to send a donation to help improve the impoverished conditions that still exist in Haiti.

Here is the announcement that went out on Facebook about the Fundraisers:

“Reina Galjour is a midwife from our community, who has been living & working in Haiti since February 2010, training Haitian midwives with an organization called Midwives for Haiti (MWH). Please come to this illuminating presentation for an insiders' view into the present situation facing women who are pregnant/giving birth in Haiti, as well as the hope brought forth by this new wave of midwives. Reina

will share stories and pictures, a 15-minute documentary about MWH, as well as entertain questions. Reina is collecting funds for MWH (Paypal & credit cards) and for direct patient care (cash or checks) at the public hospital where she works, which has no running water, no toilets, and scarce supplies/medications. This will be a fun and informative community event; EVERYONE is welcome, and ANY contribution is worthwhile! We will share beautiful Haitian music; dancing is encouraged!”

**Haw River Ballroom**  
**6pm Wed. Sept. 21**  
**Saxapahaw Rd., Saxapahaw, NC**

**Carr Mill Mall (inside Weaver ST. entrance)**  
**4 pm Sat. Sept. 24**  
**Carr Mill Mall, Carrboro, NC**

*Kathleen Wright taught grades 1-4 and German at the Emerson Waldorf School in the years 1986-1990, and taught Extra Lesson and German here in 1991/92. She has also taught at the Mt. Laurel Waldorf School and the Monadnock Waldorf Schools. She lived in the Spring Valley area for 6 years, where her children attended the Green Meadow Waldorf School and she worked at the Fellowship Community. Kathleen obtained a master’s degree in Special Education and taught in public schools for many years as well. Currently, she tutors privately and is editor of the anthroposophical newsletter, the **Sophia Sun**.*

**Anthroposophical Society’s Michaelmas 2011**

*Saturday, October 1 at 12:30 p.m. at the community room at Solterra in Durham. Bring a potluck dish to share.*

We hope you can join the ASNC on Saturday, October 1, to celebrate Michaelmas as a community. Food, music, thought and artistic activity will provide an opportunity to enrich our individual and community life and sustain our efforts to live the teachings of Rudolf Steiner and Anthroposophy. We will begin by sharing a pot-luck lunch at 12:30 p.m. The Rudolf Steiner Branch will supply plates, napkins, flatware, cups and drinks. At 2:00 p.m., we will sing, listen to lyre music and work with a lecture by Rudolf Steiner, Love and Its Meaning in the World.

Bruce Kirchoff will provide a context for the lecture and artistic activity, and the group will highlight the main ideas of the lecture. We hope you will be able to read the lecture beforehand, but this review will be enough to participate in the artistic activity to follow if you are not able to read the lecture ahead of time. After the review, each person

will have time to draw an image of a meaningful idea inspired by the lecture that they wish to meditate on. We will then present our pictures and explain what the image has to do with the lecture and our anthroposophic efforts. We will not analyze the drawings or critique artistic ability. This sharing should help us support each other’s meditative life in a rich way. We will close with music and another song by 4:30 p.m.

For this festival, we will gather in a new place, a Common Space near Joanna Carey’s home. For directions, email Peg at [mcarmody@nc.rr.com](mailto:mcarmody@nc.rr.com) or Joanna at [joannapcarey@gmail.com](mailto:joannapcarey@gmail.com) or use Joanna’s address in your GPS: 112 Solterra Way. Pass her home on your left and go to the end of the street. It will end in the parking lot for the common space.

You may access the lecture through Rudolf Steiner archives by its title or contact Peg (919-537- 8142 or [mcarmody@nc.rr.com](mailto:mcarmody@nc.rr.com)) to send you a hard copy. We ask a small donation of \$1 to cover the costs of the copying and postage if you can afford it. – *Peg Carmody, Board President of the ASNC*

**Extracurricular Calendar**

Sept. 7	W.	HS Cross Country @ Wendell Park vs. East Wake 4:00pm
Sept. 8	Th.	Middle School Jazz Band 3:30pm High School Jazz Band 5:00pm
Sept. 13	T.	MS Cross Country @ Friends School 4:30pm
Sept. 15	Th.	Middle School Jazz Band 3:30pm High School Jazz Band 5:00pm

[www.calendarwiz.com/emersonwaldorf](http://www.calendarwiz.com/emersonwaldorf)

# STAY INFORMED!

The *Emersonian* is published on the first Wednesday of each month during the school year.

The last issue for the 2010-11 year will be distributed:

**Wednesday, 10/5/11**

Materials are due by:

**3:00 pm, Wednesday, 9/28/11**

We invite readers to submit articles for consideration which relate to school activities and events. Emerson Waldorf Reserves editorial rights, including the right to reject any material it deems unsuitable for publication.

### Guidelines for *Emersonian* Submissions

All submissions are due by the deadline date at 3:00 pm via email to [emersonian@emersonwaldorf.org](mailto:emersonian@emersonwaldorf.org). We will do our best to include your submission; however, due to space constraints, we may not always be able to include all items. Ad sizes (below) are approximate and are sometimes modified to fit in the layout. To Advertise email Kelley Wiley at [emersonian@emersonwaldorf.org](mailto:emersonian@emersonwaldorf.org) or call (919) 967-1858 x13.

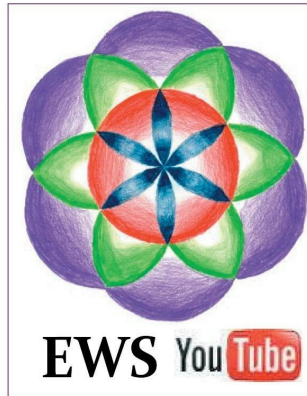
### ADVERTISING RATES

(width x height in inches)

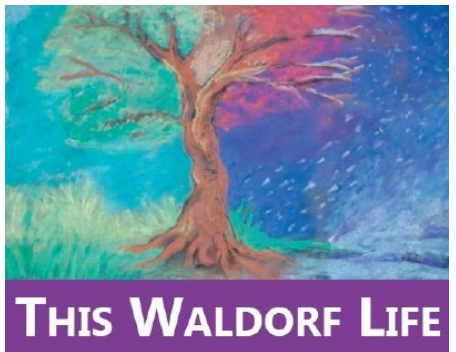
Classified text (per word) : \$ .25  
Sm Card (2 1/4 x 3 1/2) : \$14.00  
Ext Card (2 1/4 x 4 1/4) : \$19.00  
1/4 page (4 3/4 x 4 1/4) : \$30.00  
Insert (8 1/2 x 11) : \$75.00

Please note: small and extended card ads must be prepared in a vertical orientation.

[www.emersonwaldorf.org](http://www.emersonwaldorf.org)



The deadline for the *Gnome News* is **Friday, September 9 by 3:00 p.m.**



**Main Office: 967-1858**  
Mon-Fri 8:00am—4:00pm  
**High School Office: 932-1195**  
**Early Childhood Office: 967-3362**

**Community advertisements and services offered in the *Emersonian* or other circulars produced by Emerson Waldorf School are paid advertisements and do not necessarily reflect the views and opinions of Emerson Waldorf School or its employees.**

# Community Advertisements



## the JUDY WEINSTOCK

Local: 919 951 1800  
888 SEE JUDY (888 733 5839)  
www.seejudy.com

team

*Buying or selling a home requires  
Head, Heart and Hands-on expertise.*

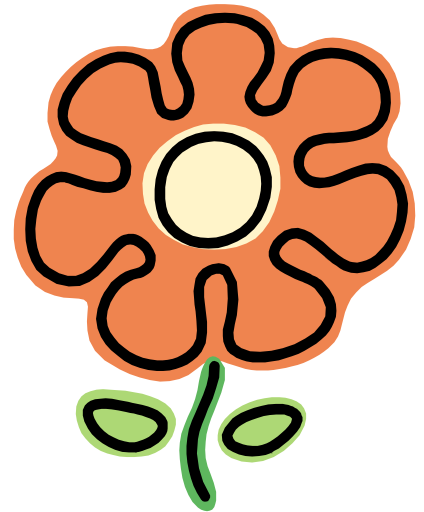
- *Alumni Parent*
- *Decades of Experience*
- *Residential and Commercial*
- *Donating to EWS with every sale*

*Call us to help!*



1516 EAST FRANKLIN STREET, CHAPEL HILL, NC 27514  
KELLER WILLIAMS REALTY

LILIPOH: The holistic lifestyle magazine. Consciousness studies, Waldorf, biodynamic gardening, anthroposophic health, nutrition and more. Subscribe for less than the cost of a pizza! \$20  
[www.lilipoh.com](http://www.lilipoh.com)



Cori Roth.....Wholistic, Dr. Hauschka Esthetician (Licensed & Certified) and authorized Dr. Hauschka retailer. To receive a healing facial please visit [divinerose.com](http://divinerose.com) for more info.





# *n f a r m*

September 2011

A Newsletter for Waldorf School Communities  
from the Association of Waldorf Schools of North America

**A new year has started** for many and will start soon for many more... Welcome back to a new school year and thank you for the efforts you make for the children given to our care now and for the future! These days are so fraught with many issues and distractions, and these times in which we live are very demanding. All the efforts we make, and the joy we bring to making those efforts, instruct our children. Enormous gratitude from us here at AWSNA goes out to you all for your golden schools – even those in the midst of seemingly insurmountable difficulties.



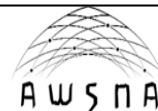
The **Service Weekend on the Pine Ridge Reservation** in South Dakota at the Lakota Waldorf School (LWS) and the Oglala Lakota College (OLC) is set for April 19-22, 2012. Save the dates and join us there! Our success in New Orleans serves as a light to lead us to the next place where our help can make a substantial difference. Watch the AWSNA “official site” on Facebook for more information or sign up to receive our monthly e-update

on [www.whywaldorfworks.com](http://www.whywaldorfworks.com). But start your plans now! The Lakota Prairie Ranch Resort is the place to stay, unless you are of remarkable stamina and want to stay in the tipis at the school’s Tipi Camp. Both are possibilities and the experience promises to be rich and effective in its help.

**AWSNA is the steward** of the names of “Waldorf” and “Steiner” Education. This responsibility is ably managed by Frances Kane and requires vigilance and a compassionate firmness in explaining to the world (and to many individuals) the importance of protecting the names and the meaning of the names, especially in cases in which individuals are earning income from the use of the name. These examples are abundant and range from the simple (one man was selling Papyrus-making kits on the internet and claiming that using these is “doing” Waldorf Education!) to the very complex. There are those who might claim that the term is already generic – even those who work to make it so – but this is not the case. Clarity and communication ensures that the integrity of these terms remains strong. You can help by reporting violations to AWSNA, attention Frances Kane, when you come upon them. AWSNA works closely with the Waldorf School Association of Ontario (WSAO) that holds the marks in Canada.

**AWSNA’s Annual Summer Conference**, graciously hosted by the Waldorf School of Garden City, was a great success, with a record attendance of 334 teachers, administrators, and board members from our schools – from Mexico to Canada! Dr. Peter Selg delivered seven (also a record) lectures on adolescence that started with “Unborn-ness.” Everything he said was thorough and engaging. Idealism, love, relationship, and service are a few thoughts about adolescence upon which Dr. Selg touched.

**As a Member School of AWSNA**, your school enjoys “Strength through Collaboration” with 166 Waldorf Schools and Institutes in North America and over 1,000 globally. Together we do what no single school can do alone: Publications; research; participation in national organizations like the Council for American Private Education (CAPE); service mark protection; international leadership representation; and the “voice” for Waldorf Education.



*Twig's Fall 2011  
Back-to-School Outreach*

# Support *Your* School

while saving on back-to-school supplies

*Here's how:* simply make a purchase of \$25 or more at Twig before September 15th and Twig will donate \$5 to your school.\*

\* Limit one per family. Offer valid until September 15th, 2011

The donation must be requested at the time of purchase.

*School Name:* Emerson Waldorf School

---

*Plus, Here is a Coupon for YOU*

**25% Off**

Any Single Back-to-School Item\*

\*Limit one per family. Expires 9/15/11

Can't be combined with other offers or sale items.

*Twig is your local eco-specialty shop:  
earth friendly lunch kits, to-go drinkware  
& school supplies*



99 S. Elliott Rd. (next to Whole Foods) Chapel Hill, NC

[www.twigliving.com](http://www.twigliving.com) • 919.929.8944