

Calendar of Events

- Jan. 13 Th. 1st Grade Parent Evening 7:00pm
5th Grade Parent Evening 7:00pm
- Jan. 15 Sat. Waldorf Education Day 9:00am
Open House 1:00pm
- Jan. 17 Mon. NO SCHOOL – MLK Jr. Birthday Holiday
- Jan. 19 Wed. 12th Grade Parent Evening 7:00pm
- Jan. 22 Sat. Instrumental Concert Gr. 6-11 6:30pm
- Jan. 24 Mon. 11th Grade Parent Evening w/ Dr. Rich Tapper
7:00pm
- Jan. 25 Tues. Nursery & Kindergarten Parent Evening 7:00pm
- Jan. 26 Wed. 2nd Grade Parent Evening 7:00pm

www.calendarwiz.com/emersonwaldorf

Burrito Lunches for Students

The class of 2014 will be offering fresh, hot and healthy lunches each Friday! Black bean burritos with chips and salsa from Cosmic Cantina will be delivered to the students by the 9th graders beginning January 21.

Just return an order form to the lower or high school office **by Wednesday, January 19th** and you are off the hook for making lunches on Fridays. You will also support the 9th grade as they plan for a service trip in their senior year. Thanks for your support.

Contact Rhonda Lanning at 933-7068 or jasonrhonda@bellsouth.net.

—Rhonda Lanning, for the class of 2014

Re-Enrollment and Financial Aid Deadline Reminder

Please remember that re-enrollment time is here and the deadline for your full deposit credit is January 17th. You should have received an email from TADS (support@TADS.com) with instructions on how to proceed. If you are applying for financial aid you must enroll first, and then submit your completed financial aid application to TADS, by January 17th. For those students with parents living in separate households, both parents are required to each submit a completed financial aid application. We greatly appreciate your promptness with this process.—*Joanne Andruscavage*

Eurythmy for Adults and Friends

Will start Wednesday, January 19th 8:30 - 10:00. The class will focus on tone eurythmy with Aileen Niessen, a eurythmist visiting from Switzerland. This is a great opportunity to join the class if you have been thinking about it and haven't made it yet. Five classes Jan. 19 - Feb. 16 \$50.00. Enquiries: Eve Olive 489-2564 or eveolive@frontier.com

Directory Update

Please update your directories with the following:

Hoeg, Erin and Jens

Jens' new email — jchoeg@gmail.com

Erin's new email — echoeg@gmail.com

McGonigle, Jen and Jeremy Ramont

Correct Home Phone #: 286-0360



Main Office: 967-1858

Mon-Fri 8:00am—4:00 p.m.

High School Office: 932-1195

Early Childhood Office: 967-3362

The deadline for the *Gnome News* is
Friday, January 14 by 3:00 p.m.

Announcements

Jazz Ensemble

Our jazz band focuses on learning a variety of straight-ahead jazz standards as well as blues and Latin styles. Players will focus on developing jazz skills such as improvisation. The EWS Jazz Band makes frequent appearances in the community, both at EWS and beyond.

The group is led by Dr. Erich Lieth, noted improvisation instructor and member of Saludos Compay Latin Jazz band. The ensemble is open to experienced and proficient instrumentalists and vocalists grade 6 and up, especially piano, guitar, bass, drum set and woodwind or brass instruments.

The current session of band will run every Thursday that school is in session from 3:30-4:45 p.m. through March 17. The cost is \$132. To register or for more information contact Erich Lieth, erich@erichlieth.com.

Chamber and Old-Time Band Ensembles

This winter and spring we have more musical opportunities than ever, so I hope you will encourage your child to participate. These ensembles are fun and really give your child a great chance to apply what we learn in school.

There is a fee for these activities that usually amounts to about \$10-\$15 per session, and most sessions are 60 or 75 minutes. Check with the individual instructors for fee, registration and schedule details.

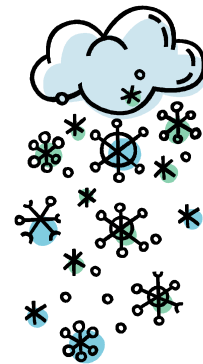
Chamber Ensemble

Thursdays, 3:30 - 4:30pm in the eurythmy room—beginning Thursday, January 13. To register or for more information: Jane Salemsen, britcellist@gmail.com or 929-2477.

Old-Time Music String Band

Tuesdays, 3:30 - 4:30 in the music room— beginning Tuesday, January 18. To register or for more information: Jason Child, jasonchild@waldorfmusic.org.

Please note that the “Spaghetti and Meatball Supper” has been moved from Saturday, January 22nd to Saturday, February 5th.
More details to follow.



Extracurricular Calendar

Jan. 13	Th.	EWS Chamber Ensemble 3:30pm EWS Jazz Ensemble 3:30pm HS Boys Basketball @ Hopewell; Bond Park Cary 4:00pm
Jan. 14	Fri.	MS Girls Basketball @ HOMVE vs. Voyager 4:00pm MS Boys Basketball @ HOME vs. Voyager 5:00pm HS Boys Basketball @ HOME vs. Pace Academy 6:15pm
Jan. 18	Tues.	Old Time Music Band Ensemble 3:30pm MS Girls Basketball @ Trinity 4:00pm MS Boys Basketball @ Trinity 5:15pm HS Boys Basketball @ Woods Charter 6:00pm

www.calendarwiz.com/emersonwaldorf

We Love Waldorf Teachers!
We all love our teachers at EWS, but did you ever think about what it is like to **be** a Waldorf Teacher? Watch the new video on Waldorf Teachers from AWSNA, the Association of Waldorf Schools of North America:
Waldorf: Be A Teacher

The Wisdom of Waldorf Education

Evidence from Modern Brain Research

*Saturday, January 15
9am-noon*

Do our children really need more time reading, writing and doing arithmetic? What is the role of art, music, movement and emotions in learning? Join us for a workshop exploring what brain research is teaching us about the way children learn.

**EMERSON
WALDORF SCHOOL**

Suggested Donation: \$5
Childcare available for \$15 if reserved by January 13.
Register Now: 967-1858

6211 New Jericho Road, Chapel Hill

www.EmersonWaldorfSchool.org

Happy New Year!

The **SCRIP** table will be available for buying gift cards on the following days:

- Monday at Kindergarten/Nursery: Pick-up
- Monday at Lower Grades: Pick-up
- Tuesday at Lower Grades: Drop-off
- Wednesday at Lower Grades: Pick-up
- Friday at Kindergarten/Nursery: Pick-up
- Friday at Lower Grades: Pick-up

ShopWithScrip.com Welcomes Target



ShopWithScrip.com is excited to welcome **Target** as the newest addition to the ShopWithScrip retailer list:

Target GiftCards® let you shop for thousands of items at more than 1,700 Target and SuperTarget® locations, as well as Target.com. From home décor to fashion to electronics, find what you're looking for at Target. No fees. No expiration. No kidding.

ShopWithScrip User Tip: Have You Tried Reloading?



Reloading gift cards through ShopWithScrip is easy, and it keeps your used gift cards out of the landfill. Generally speaking, orders received and paid for before 3:30 PM weekdays will be reloaded by the next business day. If you pay with PrestoPay when ordering, your reload will automatically be processed without creating any more work for your coordinator. *Reloading...it's easy and convenient!*

Some of the retailers who participate are: Barnes & Noble, CVS, Exxon, Gap and Starbucks, as well as others.

Buy gas cards, Whole Foods, Target, Food Lion, Chipotle, Barnes & Noble, Lowe's, Itunes, as well as, many, many more retailers. The face value's the same for you; the company gives

Emerson Waldorf School a percentage of that money!!

Questions or Comments? Contact Danielle Tanzer at 523-1744 or

twc9195445181@earthlink.net



Burrito Fridays!

Large bean, rice and cheese burritos with chips and salsa, delivered to the students each Friday.

A soft flour tortilla with black beans, cheese, and rice.
Chips and fresh salsa on the side.

Made fresh from scratch for EWS by *Cosmic Cantina* and delivered piping hot.

Burrito Friday is provided by the class of 2014,
which is raising funds toward their senior year service trip.

This order form covers **sixteen weeks** of burrito lunches which is all the full-day Fridays we have until the end of the year!

Burritos will start on Friday January 21

Burrito lunches are \$4 each. Total to be billed on this form is \$64.

Please fill out one form per child.

Parent signature is required as lunches will be billed through TADS.

Return completed form to the lower school or high school office by Jan 19.

Contact Rhonda Lanning (jasonrhonda@bellsouth.net) with any questions

Child's Name: _____ Grade: _____

Parent Name (print): _____

Parent Signature: _____ Date: _____

NOTE: If you know ahead of time that your child will not be in school for a given Friday, or to begin burrito lunches after the start, please indicate this and deduct \$4 per lunch missed. If your child misses school due to an illness or other reason, no refund will be given and the burrito will be donated to a teacher or staff member. Reasonable effort will be made to make up cancellations due to inclement weather.